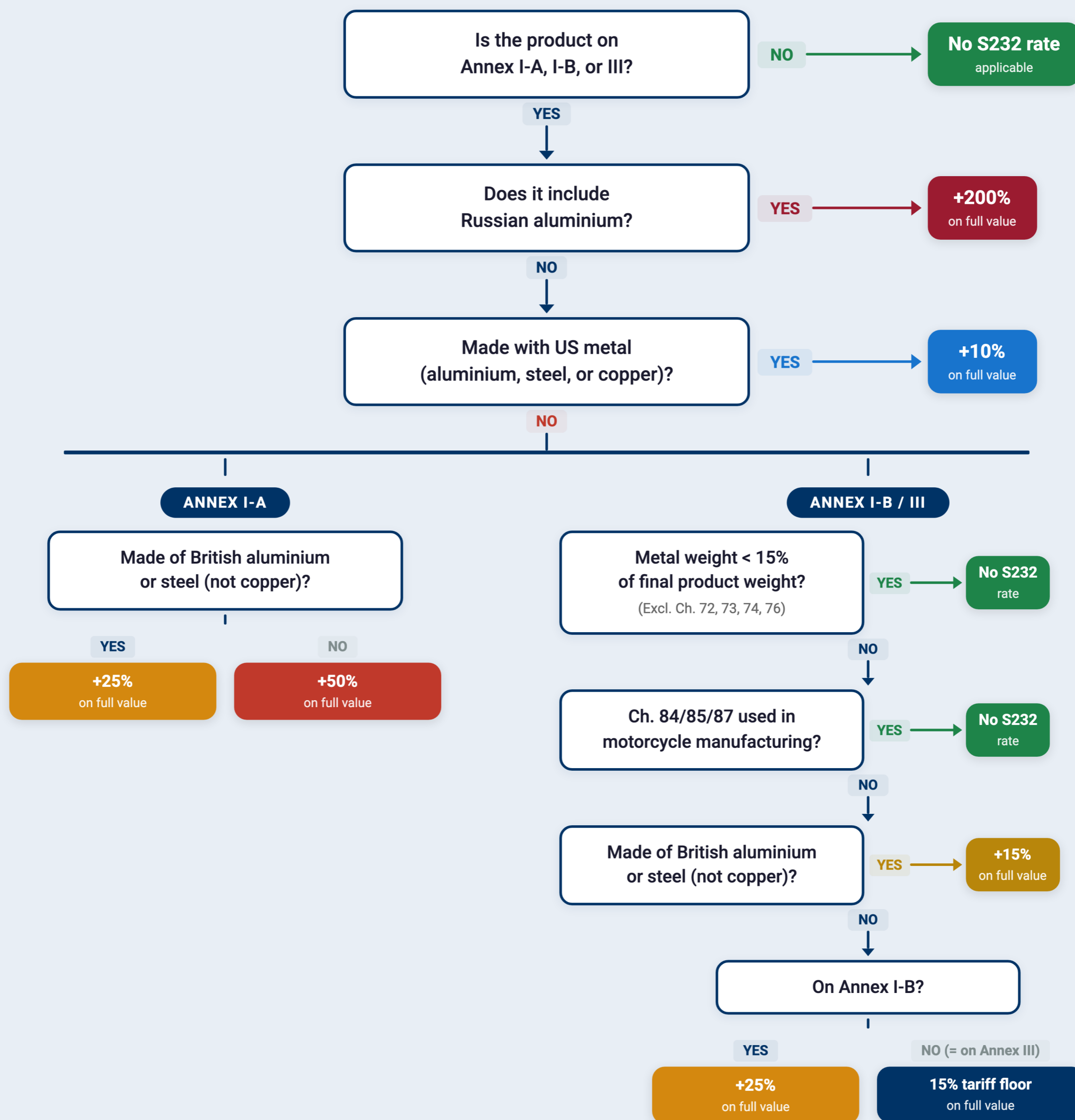


Section 232 Metals Tariff Decision Tree

Aluminium, Steel and Copper | EO of 2 April 2026 | Annexes I-A, I-B, II, III, IV



A = Aluminium | S = Steel | C = Copper | HTS = Harmonised Tariff Schedule rate | Ch. = HS Chapter

British = UK-origin under applicable S232 deal. Annex I-A: basic metals & derivatives. Annex I-B: downstream articles. Annex III: further downstream (formula-based rate).